

TOURIST ACCOMMODATION

TASMANIA

EMBARGO: 11:30AM (CANBERRA TIME) FRI 13 DEC 1996

SEPTEMBER QTR KEY FIGURES

	Sep 95	Sep 96	change
Hotels, Motels and Guest Houses (a)			
Rooms available (No.)	5 452	5 604	2.8 %
Room occupancy rate (%)	42.1	38.7	-3.4 pts
Takings from accommodation (\$'000)	15 501	14 362	-7.3 %
Holiday Flats, Units and Houses (a)			
Units, etc. available (No.)	821	858	4.5 %
Unit occupancy rate (%)	38.3	35.5	-2.8 pts
Takings from accommodation (\$'000)	1 933	1 922	-0.6 %
Caravan Parks			
Sites, cabins, etc. available (No.)	6 417	6 491	1.2 %
Site occupancy rate (%)	27.7	28.3	0.6 pts
Takings from accommodation (\$'000)	1 111	1 209	8.8 %
Visitor Hostels (a)			
Bed spaces available (No.)	1 770	2 096	18.4 %
Bed occupancy rate (%)	8.1	9.2	1.1 pts
Takings from accommodation (\$'000)	158	207	31.0 %

(a) Coverage breaks in series occurred as from September quarter 1996. See page 2, 'Changes in this issue'.

SEPTEMBER QTR KEY POINTS

MIXED OCCUPANCY RESULTS

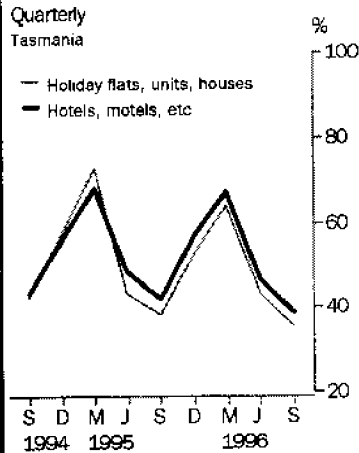
- Demand for accommodation in hotels, motels and guest houses decreased in terms of room nights occupied, while available capacity increased in September quarter 1996 compared with September quarter 1995. The room occupancy rate thus fell by 3.4 percentage points to 38.7%. Similarly, unit nights occupied in holiday flats, units and houses decreased while available capacity increased, resulting in a fall of 2.8 percentage points in the unit occupancy rate to 35.5%.
- For caravan parks, however, demand increased by a higher proportion than an increase in capacity available, resulting in a 0.6% percentage point rise in the site occupancy rate to 28.3%.
- For visitor hostels, there was a substantial coverage improvement resulting in a major break in series. Comparing September quarter 1996 data with that for previous periods should be done with caution. See page 2, 'Changes in this issue'.

TAKINGS FROM ACCOMMODATION

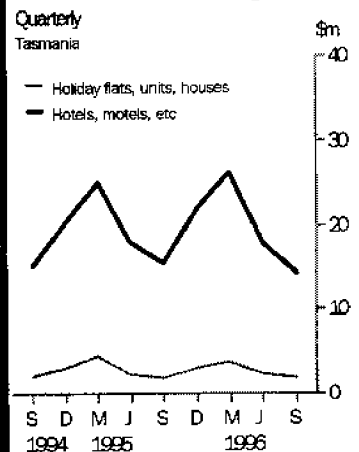
- Takings from accommodation decreased in aggregate, in September quarter 1996 compared with September quarter 1995, for hotels, motels and guest houses and for holiday flats, units and houses, but increased for caravan parks and for visitor hostels. In terms of average takings per occupied night, only minor changes were recorded for each establishment type.

**Australian
Bureau of
Statistics**

Occupancy rates



Accommodation takings



INQUIRIES

- For further information about these and related statistics, contact Jennifer Cox on 07 3222 6148, or any ABS Office.

NOTES

FORTHCOMING ISSUES

ISSUE (Quarter)

EXPECTED RELEASE DATE

December 1996

14 March 1997

.....

CHANGES IN THIS ISSUE

COVERAGE BREAKS IN SERIES

As a result of improved coverage of in-scope establishments in Tasmania as from September quarter 1996, there were minor Tourist Accommodation statistics breaks in series for hotels, motels and guest houses and for holiday flats, units and houses respectively and a major break in series for visitor hostels.

For hotels, motels and guest houses, improved coverage of in-scope establishments represented 1.1% of rooms available, 0.9% of bedspaces and 0.6% of both room nights occupied and takings from accommodation as published for September quarter 1996.

For holiday flats, units and houses, improved coverage accounted for 1.6% of flats and units available, 2.0% of bedspaces and 1.8% of both unit nights occupied and takings from accommodation as published for September quarter 1996.

for visitor hostels, improved coverage of in-scope establishments represented 20.4% of bedspaces available, 21.4% of guest nights and 21.1% of takings from accommodation as published for September quarter 1996.

DIAGRAMS

Diagrams depicting monthly room/unit occupancy rates for Statistical Divisions and East Coast Tourist Area, previously on pages 12 and 13, are discontinued as from this issue.

MAP

A map showing Statistical Divisions and Statistical Subdivisions, Tasmania, 1996 has been added on page 22.

.....

D. ROGERS

Regional Director, Tasmania

TABLE 1 — SUMMARY OF HOTELS, MOTELS AND GUEST HOUSES WITH FACILITIES, TASMANIA (a)

Particulars	Unit	Quarter ended				Year ended			
		June 1995	September 1995	December 1995	March 1996	June 1996	September 1996	September 1995	September 1996
LICENSED HOTELS WITH FACILITIES									
Establishments	No.	92	92	92	92	92	92
Guest rooms	No.	3,545	3,566	3,566	3,580	3,582	3,510
Bed spaces	No.	9,932	9,946	9,911	9,924	10,015	9,817
Employment (persons)	No.	3,403	3,445	3,772	3,659	3,495	3,475
Room nights occupied	No.	157,516	140,180	186,265	211,766	149,879	129,619	685,073	677,529
Room occupancy rate	per cent	48.8	42.7	56.8	65.0	46.1	40.1	53.1	52.1
Guest nights	No.	261,030	228,065	309,095	371,418	242,777	202,198	1,158,982	1,125,488
Bed occupancy rate	per cent	28.9	24.9	33.9	41.1	26.7	22.4	32.0	31.0
Guest arrivals	No.	139,779	120,236	166,013	201,995	127,544	109,504	635,009	605,056
Average length of stay	days	1.9	1.9	1.9	1.8	1.9	1.8	1.8	1.9
Takings from accommodation	\$'000	12,719	11,026	15,252	17,496	12,129	9,784	54,831	54,661
MOTELS AND GUEST HOUSES WITH FACILITIES									
Establishments	No.	87	87	88	88	88	96
Guest rooms	No.	1,863	1,886	1,937	1,940	1,941	2,094
Bed spaces	No.	5,767	5,781	5,981	6,075	6,028	6,384
Employment (persons)	No.	749	777	874	884	762	787
Room nights occupied	No.	80,573	70,947	102,522	125,440	84,416	69,743	366,815	382,121
Room occupancy rate	per cent	47.6	40.9	57.5	71.1	47.8	36.2	54.0	52.8
Guest nights	No.	148,175	130,033	187,096	237,395	150,164	122,109	689,521	696,764
Bed occupancy rate	per cent	28.3	24.5	34.0	42.9	27.4	20.8	32.9	31.1
Guest arrivals	No.	89,147	74,128	106,934	139,100	92,343	73,074	403,791	411,451
Average length of stay	days	1.7	1.8	1.7	1.7	1.6	1.7	1.7	1.7
Takings from accommodation	\$'000	5,235	4,475	6,838	8,771	5,686	4,578	23,746	25,874
TOTAL HOTELS, MOTELS AND GUEST HOUSES WITH FACILITIES									
Establishments	No.	179	179	180	180	180	188
Guest rooms	No.	5,408	5,452	5,503	5,520	5,523	5,604
Bed spaces	No.	15,699	15,727	15,892	15,999	16,043	16,201
Employment (persons)	No.	4,152	4,222	4,646	4,543	4,257	4,262
Room nights occupied	No.	238,089	211,127	288,787	337,206	234,295	199,362	1,051,888	1,059,650
Room occupancy rate	per cent	48.4	42.1	57.0	67.1	46.7	38.7	53.4	52.3
Guest nights	No.	409,205	358,098	496,191	608,813	392,941	324,307	1,848,503	1,822,252
Bed occupancy rate	per cent	28.7	24.8	33.9	41.8	27.0	21.8	32.3	31.1
Guest arrivals	No.	228,926	194,364	272,947	341,095	219,887	182,578	1,038,800	1,016,507
Average length of stay	days	1.8	1.8	1.8	1.8	1.8	1.8	1.8	1.8
Takings from accommodation	\$'000	17,954	15,501	22,090	26,267	17,815	14,362	78,577	80,534

(a) Coverage breaks in series occurred as from September quarter 1996. See page 2, "Changes in this issue".

TABLE 2 — SUMMARY OF CARAVAN PARKS, TASMANIA

Particulars	Unit	Quarter ended				Year ended			
		June 1995	September 1995	December 1995	March 1996	June 1996	September 1996	September 1995	September 1996
SHORT-TERM CARAVAN PARKS									
Establishments	No.	63	59	59	59	60	57
Capacity									
On-site vans	No.	273	248	259	244	235	235
Other powered sites	No.	3,101	2,895	2,907	2,980	2,941	2,839
Unpowered sites	No.	1,932	1,756	1,750	1,768	1,778	1,691
Cabins, etc.	No.	362	364	376	394	386	356
<i>Total capacity</i>	<i>No.</i>	<i>5,668</i>	<i>5,263</i>	<i>5,292</i>	<i>5,386</i>	<i>5,340</i>	<i>5,121</i>
Sites occupied by long-term guests	No.	269	216	221	211	227	202
Other sites permanently reserved	No.	1,018	984	1,050	1,061	1,053	1,072
Employment (persons)	No.	198	194	225	224	196	201
Site nights occupied	No.	156,710	134,839	166,716	213,884	151,778	140,470	672,055	672,848
Site occupancy rate	per cent	30.4	28.1	34.2	43.6	31.2	29.8	32.4	34.8
Takings from accommodation	\$'000	1,237	841	1,544	2,606	1,229	878	6,054	6,257
LONG-TERM CARAVAN PARKS									
Establishments	No.	12	13	13	13	13	16
Capacity									
On-site vans	No.	118	137	121	122	132	135
Other powered sites	No.	504	586	578	573	565	662
Unpowered sites	No.	233	340	360	351	350	438
Cabins, etc.	No.	102	91	89	92	92	135
<i>Total capacity</i>	<i>No.</i>	<i>957</i>	<i>1,154</i>	<i>1,148</i>	<i>1,138</i>	<i>1,139</i>	<i>1,370</i>
Sites occupied by long-term guests	No.	183	208	198	211	223	240
Other sites permanently reserved	No.	17	25	41	36	33	35
Employment (persons)	No.	40	44	46	49	48	63
Site nights occupied	No.	26,124	27,243	29,884	35,972	28,260	28,722	108,945	122,838
Site occupancy rate	per cent	30.0	25.7	28.3	34.7	27.3	22.8	29.7	28.0
Takings from accommodation	\$'000	286	270	378	520	346	331	1,284	1,575
TOTAL CARAVAN PARKS									
Establishments	No.	75	72	72	72	73	73
Capacity									
On-site vans	No.	391	385	380	366	367	370
Other powered sites	No.	3,605	3,481	3,485	3,553	3,506	3,501
Unpowered sites	No.	2,165	2,096	2,110	2,119	2,128	2,129
Cabins, etc.	No.	464	455	465	486	478	491
<i>Total capacity</i>	<i>No.</i>	<i>6,625</i>	<i>6,417</i>	<i>6,440</i>	<i>6,524</i>	<i>6,479</i>	<i>6,491</i>
Sites occupied by long-term guests	No.	452	424	419	422	450	442
Other sites permanently reserved	No.	1,035	1,009	1,091	1,097	1,086	1,107
Employment (persons)	No.	238	238	271	273	244	264
Site nights occupied	No.	182,834	162,082	196,600	249,856	180,038	169,192	781,000	795,686
Site occupancy rate	per cent	30.3	27.7	33.2	42.1	30.5	28.3	32.0	33.5
Takings from accommodation	\$'000	1,523	1,111	1,923	3,126	1,575	1,209	7,338	7,833

TABLE 3—SUMMARY OF HOLIDAY FLATS, UNITS AND HOUSES, TASMANIA (a)

Particulars	Unit	Quarter ended				Year ended			
		June 1995	September 1995	December 1995	March 1996	June 1996	September 1996	September 1995	September 1996
Letting entities	No.	54	54	54	54	55	57
Flats, units and houses									
Single bedroom	No.	230	226	235	235	241	240
Multiple bedroom	No.	600	595	595	595	605	618
Total flats, units and houses	No.	830	821	830	830	846	858
Bed spaces	No.	3,677	3,665	3,660	3,657	3,696	3,800
Employment (persons)	No.	295	343	367	356	307	322
Unit nights occupied	No.	32,897	28,778	40,351	48,512	33,371	28,000	161,202	150,234
Unit occupancy rate	per cent	43.6	38.3	52.8	64.2	43.3	35.5	53.1	48.8
Unit lettings	No.	15,872	13,236	19,731	23,801	16,116	13,426	76,471	73,074
Average length of stay	days	2.1	2.2	2.0	2.0	2.1	2.1	2.1	2.1
Takings from accommodation	\$'000	2,343	1,933	2,958	3,835	2,374	1,922	11,703	11,089

(a) Coverage breaks in series occurred as from September quarter 1996. See page 2, "Changes in this issue".

TABLE 4—SUMMARY OF VISITOR HOSTELS, TASMANIA (a)

Particulars	Unit	Quarter ended				Year ended			
		June 1995	September 1995	December 1995	March 1996	June 1996	September 1996	September 1995	September 1996
Establishments	No.	42	41	41	41	40	46
Bed spaces	No.	1,748	1,770	1,719	1,727	1,684	2,096
Employment (persons)	No.	113	95	110	112	105	130
Guest nights	No.	20,257	12,804	29,682	48,155	21,872	17,803	108,043	117,512
Bed occupancy rate	per cent	12.8	8.1	18.8	30.6	14.3	9.2	16.8	17.8
Guest arrivals	No.	12,733	8,046	19,053	32,208	13,386	11,743	66,213	76,390
Average length of stay	days	1.6	1.6	1.6	1.5	1.6	1.5	1.6	1.5
Takings from accommodation	\$'000	226	158	361	580	261	207	1,308	1,409

(a) Coverage breaks in series occurred as from September quarter 1996. See page 2, "Changes in this issue".

TABLE 5 — HOTELS, MOTELS AND GUEST HOUSES WITH FACILITIES BY STAR GRADING, TASMANIA (a)

Particulars	Licensed hotels with facilities	Motels and guest houses	Star grading			Total
			1, 2 and Ungraded	3	4 and 5	
ESTABLISHMENTS, CAPACITY AND EMPLOYMENT						
<i>September quarter 1995—</i>						
Establishments	92	87	66	86	27	179
Guest rooms	3,566	1,886	1,239	2,670	1,543	5,452
Bed spaces	9,946	5,781	3,455	7,868	4,404	15,727
Employment (persons)	3,445	777	841	1,414	1,967	4,222
<i>September quarter 1996—</i>						
Establishments	92	96	66	84	38	188
Guest rooms	3,510	2,094	1,224	2,562	1,818	5,604
Bed spaces	9,817	6,384	3,425	7,632	5,144	16,201
Employment (persons)	3,475	787	834	1,282	2,146	4,262
ROOM NIGHTS OCCUPIED						
<i>September quarter 1995</i>	140,180	70,947	34,255	98,302	78,570	211,127
<i>1996—</i>						
July	42,079	21,476	9,128	26,429	27,998	63,555
August	41,320	21,918	8,760	27,418	27,060	63,238
September	46,220	26,349	10,312	32,733	29,524	72,569
<i>September quarter 1996</i>	129,619	69,743	28,200	86,580	84,582	199,362
ROOM OCCUPANCY RATES (per cent)						
<i>September quarter 1995</i>	42.7	40.9	30.1	40.0	55.4	42.1
<i>1996—</i>						
July	38.7	33.1	24.1	33.3	49.7	36.6
August	38.0	33.8	23.1	34.5	48.0	36.4
September	43.9	41.9	28.1	42.6	54.1	43.2
<i>September quarter 1996</i>	40.1	36.2	25.0	36.7	50.6	38.7
GUEST NIGHTS						
<i>September quarter 1995</i>	228,065	130,033	57,871	175,804	124,423	358,098
<i>1996—</i>						
July	63,766	36,491	15,470	44,516	40,271	100,257
August	62,781	37,612	14,796	45,907	39,690	100,393
September	75,651	48,006	18,413	59,653	45,591	123,657
<i>September quarter 1996</i>	202,198	122,109	48,679	150,076	125,552	324,307
BED OCCUPANCY RATES (per cent)						
<i>September quarter 1995</i>	24.9	24.5	18.2	24.3	30.7	24.8
<i>1996—</i>						
July	21.0	18.4	14.6	18.8	25.3	20.0
August	20.6	19.0	13.9	19.4	24.9	20.0
September	25.7	25.1	17.9	26.1	29.5	25.4
<i>September quarter 1996</i>	22.4	20.8	15.4	21.4	26.5	21.8
GUEST ARRIVALS						
<i>September quarter 1995</i>	120,236	74,128	34,267	100,760	59,337	194,364
<i>1996—</i>						
July	33,684	21,683	8,882	26,714	19,771	55,367
August	33,556	22,693	8,673	27,375	20,201	56,249
September	42,264	28,698	10,934	35,391	24,637	70,962
<i>September quarter 1996</i>	109,504	73,074	28,489	89,480	64,609	182,578
AVERAGE LENGTH OF STAY (days)						
<i>September quarter 1995</i>	1.9	1.8	1.7	1.7	2.1	1.8
<i>September quarter 1996</i>	1.8	1.7	1.7	1.7	1.9	1.8
TAKINGS FROM ACCOMMODATION (\$'000)						
<i>September quarter 1995</i>	11,026	4,475	2,058	5,900	7,543	15,501
<i>1996—</i>						
July	3,276	1,395	559	1,613	2,499	4,671
August	3,055	1,437	514	1,674	2,304	4,491
September	3,453	1,747	621	2,034	2,545	5,200
<i>September quarter 1996</i>	9,784	4,578	1,694	5,321	7,348	14,362

(a) Coverage breaks in series occurred as from September quarter 1996. See page 2, "Changes in this issue".

TABLE 6 — HOTELS, MOTELS AND GUEST HOUSES WITH FACILITIES BY ESTABLISHMENT SIZE, TASMANIA (a)

Particulars	Establishment size (No. of rooms)						Total
	5-9	10-15	16-25	26-50	51-100	101+	
ESTABLISHMENTS, CAPACITY AND EMPLOYMENT							
<i>September quarter 1995—</i>							
Establishments	41	30	31	50	19	8	179
Guest rooms	290	340	631	1,714	1,228	1,249	5,452
Bed spaces	747	925	1,760	5,118	3,763	3,414	15,727
Employment (persons)	229	330	387	931	656	1,689	4,222
<i>September quarter 1996—</i>							
Establishments	49	31	29	51	20	8	188
Guest rooms	347	356	600	1,764	1,290	1,247	5,604
Bed spaces	868	1,042	1,668	5,195	4,006	3,422	16,201
Employment (persons)	319	321	373	883	645	1,721	4,262
ROOM NIGHTS OCCUPIED							
<i>September quarter 1995</i>	8,698	11,936	20,480	66,155	40,479	63,379	211,127
<i>1996—</i>							
July	2,873	3,259	5,679	19,117	13,282	19,345	63,555
August	2,849	3,490	5,440	18,763	13,699	18,997	63,238
September	3,626	3,861	6,464	22,467	15,887	20,264	72,569
<i>September quarter 1996</i>	9,348	10,610	17,583	60,347	42,868	58,606	199,362
ROOM OCCUPANCY RATES (per cent)							
<i>September quarter 1995</i>	32.8	38.2	35.3	42.0	35.8	55.2	42.1
<i>1996—</i>							
July	26.7	29.5	30.5	35.0	33.2	50.0	16.6
August	26.5	31.6	29.2	34.3	34.3	49.1	36.4
September	34.8	36.2	35.9	42.5	41.1	54.2	43.2
<i>September quarter 1996</i>	29.3	32.4	31.9	37.2	36.1	51.1	38.7
GUEST NIGHTS							
<i>September quarter 1995</i>	13,833	19,055	34,552	116,908	75,291	98,459	358,098
<i>1996—</i>							
July	4,669	5,130	9,804	30,495	22,267	27,892	100,257
August	4,505	5,722	8,977	30,969	22,161	28,059	100,393
September	6,010	6,577	11,737	39,445	28,386	31,502	123,657
<i>September quarter 1996</i>	15,184	17,429	30,518	100,909	72,814	87,453	324,307
BED OCCUPANCY RATES (per cent)							
<i>September quarter 1995</i>	20.3	22.4	21.3	24.8	21.7	31.3	24.8
<i>1996—</i>							
July	17.4	15.9	19.0	18.9	17.9	26.3	20.0
August	16.7	17.7	17.4	19.2	17.8	26.5	20.0
September	23.1	21.0	23.5	25.3	23.6	30.7	25.4
<i>September quarter 1996</i>	19.0	18.2	19.9	21.1	19.8	27.8	21.8
GUEST ARRIVALS							
<i>September quarter 1995</i>	8,403	11,326	19,974	70,537	41,917	42,207	194,364
<i>1996—</i>							
July	3,136	3,445	5,331	18,077	12,764	12,614	55,367
August	2,940	3,567	5,424	18,197	13,258	12,863	56,249
September	3,813	4,028	7,054	23,064	18,119	14,884	70,962
<i>September quarter 1996</i>	9,889	11,040	17,809	59,338	44,141	40,361	182,578
AVERAGE LENGTH OF STAY (days)							
<i>September quarter 1995</i>	1.6	1.7	1.7	1.7	1.8	2.3	1.8
<i>September quarter 1996</i>	1.5	1.6	1.7	1.7	1.6	2.2	1.8
TAKINGS FROM ACCOMMODATION (\$'000)							
<i>September quarter 1995</i>	495	626	1,064	4,135	3,154	6,026	15,501
<i>1996—</i>							
July	163	181	316	1,176	1,069	1,765	4,671
August	167	196	288	1,166	1,051	1,624	4,491
September	210	213	358	1,410	1,283	1,726	5,200
<i>September quarter 1996</i>	540	589	962	3,752	3,402	5,116	14,362

(a) Coverage breaks in series occurred as from September quarter 1996. See page 2, "Changes in this issue".

TABLE 7 — HOTELS, MOTELS AND GUEST HOUSES WITH FACILITIES BY STATISTICAL DIVISION,
TASMANIA (a)

Particulars	Greater Hobart (SD)			Southern (SD)			Northern (SD)		
	Licensed hotels with facilities	Motels and guest houses	Total	Licensed hotels with facilities	Motels and guest houses	Total	Licensed hotels with facilities	Motels and guest houses	Total
ESTABLISHMENTS, CAPACITY AND EMPLOYMENT									
<i>September quarter 1995—</i>									
Establishments	23	27	50	14	10	24	32	23	55
Guest rooms	1,221	662	1,883	480	118	598	1,132	439	1,571
Bed spaces	3,153	2,009	5,162	1,454	414	1,868	3,321	1,402	4,723
Employment (persons)	1,444	282	1,726	244	68	312	1,230	136	1,366
<i>September quarter 1996—</i>									
Establishments	24	30	54	13	11	24	33	27	60
Guest rooms	1,218	716	1,934	409	204	613	1,163	493	1,656
Bed spaces	3,163	2,146	5,309	1,284	665	1,949	3,397	1,576	4,973
Employment (persons)	1,525	268	1,793	242	77	319	1,207	151	1,358
ROOM NIGHTS OCCUPIED									
<i>September quarter 1995</i>	59,724	29,673	89,397	10,212	3,727	13,939	47,630	17,704	65,334
<i>1996—</i>									
July	17,543	8,606	26,149	3,124	1,266	4,390	14,738	5,390	20,128
August	17,604	9,285	26,889	2,464	1,247	3,711	14,915	5,481	20,396
September	19,362	11,356	30,718	3,479	1,607	5,086	16,114	6,349	22,463
<i>September quarter 1996</i>	54,509	29,247	83,756	9,067	4,120	13,187	45,767	17,220	62,987
ROOM OCCUPANCY RATES (per cent)									
<i>September quarter 1995</i>	53.2	48.7	51.6	23.1	34.3	25.3	45.7	44.0	45.3
<i>1996—</i>									
July	46.5	38.8	43.6	24.6	20.0	23.1	40.9	35.3	39.2
August	46.6	41.8	44.8	19.4	19.7	19.5	41.4	35.9	39.7
September	53.0	52.9	52.9	28.4	26.3	27.7	46.2	42.9	45.2
<i>September quarter 1996</i>	48.6	44.4	47.1	24.1	22.0	23.4	42.8	38.0	41.3
GUEST NIGHTS									
<i>September quarter 1995</i>	92,911	56,166	149,077	21,095	8,038	29,133	77,239	32,323	109,562
<i>1996—</i>									
July	25,681	15,111	40,792	5,856	2,729	8,585	21,579	8,617	30,196
August	26,198	16,246	42,444	4,563	2,476	7,039	22,426	9,551	31,977
September	30,325	20,463	50,788	7,522	3,673	11,195	26,057	11,537	37,594
<i>September quarter 1996</i>	82,204	51,820	134,024	17,941	8,878	26,819	70,062	29,705	99,767
BED OCCUPANCY RATES (per cent)									
<i>September quarter 1995</i>	32.0	30.4	31.4	15.8	21.1	17.0	25.3	25.2	25.2
<i>1996—</i>									
July	26.2	22.7	24.8	14.7	13.2	14.2	20.5	17.6	19.6
August	26.7	24.4	25.8	11.5	12.0	11.7	21.3	19.5	20.7
September	32.0	31.8	31.9	19.5	18.4	19.1	25.6	24.4	25.2
<i>September quarter 1996</i>	28.2	26.2	27.4	15.2	14.5	15.0	22.4	20.5	21.8
GUEST ARRIVALS									
<i>September quarter 1995</i>	39,002	27,409	66,411	16,418	5,082	21,500	41,613	18,827	60,440
<i>1996—</i>									
July	11,224	8,617	19,841	4,305	1,834	6,139	11,488	5,376	16,864
August	11,913	9,530	21,443	3,504	1,714	5,218	11,922	5,894	17,816
September	14,067	10,989	25,056	5,734	2,430	8,164	14,394	7,465	21,859
<i>September quarter 1996</i>	37,204	29,136	66,340	13,543	5,978	19,521	37,804	18,735	56,539
AVERAGE LENGTH OF STAY (days)									
<i>September quarter 1995</i>	2.4	2.0	2.2	1.3	1.6	1.4	1.9	1.7	1.8
<i>September quarter 1996</i>	2.2	1.8	2.0	1.3	1.5	1.4	1.9	1.6	1.8
TAKINGS FROM ACCOMMODATION (\$'000)									
<i>September quarter 1995</i>	5,292	1,744	7,036	588	393	981	3,519	1,001	4,520
<i>1996—</i>									
July	1,486	530	2,016	187	125	313	1,088	300	1,387
August	1,390	583	1,973	145	118	263	1,048	333	1,381
September	1,554	711	2,265	214	167	380	1,136	388	1,524
<i>September quarter 1996</i>	4,429	1,824	6,253	546	410	956	3,272	1,020	4,292

TABLE 7—HOTELS, MOTELS AND GUEST HOUSES WITH FACILITIES BY STATISTICAL DIVISION,
TASMANIA (a)—continued

Particulars	Mersey-Lyell (SD)			Total Tasmania		East Coast (b)	
	Licensed hotels with facilities	Motels and guest houses	Total	Licensed hotels with facilities	Motels and guest houses	Total	Total
ESTABLISHMENTS, CAPACITY AND EMPLOYMENT							
<i>September quarter 1995—</i>							
Establishments	23	27	50	92	87	179	14
Guest rooms	733	667	1,400	3,566	1,886	5,452	465
Bed spaces	2,018	1,956	3,974	9,946	5,781	15,727	1,478
Employment (persons)	527	291	818	3,445	777	4,222	274
<i>September quarter 1996—</i>							
Establishments	22	28	50	92	96	188	16
Guest rooms	720	681	1,401	3,510	2,094	5,604	512
Bed spaces	1,973	1,997	3,970	9,817	6,384	16,201	1,670
Employment (persons)	501	291	792	3,475	787	4,262	274
ROOM NIGHTS OCCUPIED							
<i>September quarter 1995</i>	22,614	19,843	42,457	140,180	70,947	211,127	11,735
<i>1996—</i>							
July	6,674	6,214	12,888	42,079	21,476	63,555	3,382
August	6,337	5,905	12,242	41,320	21,918	63,238	3,259
September	7,265	7,037	14,302	46,220	26,349	72,569	4,428
<i>September quarter 1996</i>	20,276	19,156	39,432	129,619	69,743	199,362	11,069
ROOM OCCUPANCY RATES (per cent)							
<i>September quarter 1995</i>	33.5	32.3	33.0	42.7	40.9	42.1	27.4
<i>1996—</i>							
July	29.9	29.4	29.7	38.7	33.1	36.6	21.3
August	28.4	28.0	28.2	38.0	33.8	36.4	20.5
September	33.6	34.4	34.0	43.9	41.9	43.2	28.8
<i>September quarter 1996</i>	30.6	30.6	30.6	40.1	36.2	38.7	23.5
GUEST NIGHTS							
<i>September quarter 1995</i>	36,820	33,506	70,326	228,065	130,033	358,098	23,500
<i>1996—</i>							
July	10,650	10,034	20,684	63,766	36,491	100,257	6,552
August	9,594	9,339	18,933	62,781	37,612	100,393	6,042
September	11,747	12,333	24,080	75,651	48,006	123,657	9,493
<i>September quarter 1996</i>	31,991	31,706	63,697	202,198	122,109	324,307	22,087
BED OCCUPANCY RATES (per cent)							
<i>September quarter 1995</i>	19.8	18.6	19.2	24.9	24.5	24.8	17.3
<i>1996—</i>							
July	17.4	16.2	16.8	21.0	18.4	20.0	12.7
August	15.7	15.1	15.4	20.6	19.0	20.0	11.7
September	19.8	20.6	20.2	25.7	25.1	25.4	18.9
<i>September quarter 1996</i>	17.6	17.3	17.4	22.4	20.8	21.8	14.4
GUEST ARRIVALS							
<i>September quarter 1995</i>	23,203	22,810	46,013	120,236	74,128	194,364	17,044
<i>1996—</i>							
July	6,667	5,856	12,523	33,684	21,683	55,367	4,620
August	6,217	5,555	11,772	33,556	22,693	56,249	4,408
September	8,069	7,814	15,883	42,264	28,698	70,962	6,785
<i>September quarter 1996</i>	20,953	19,225	40,178	109,504	73,074	182,578	15,813
AVERAGE LENGTH OF STAY (days)							
<i>September quarter 1995</i>	1.6	1.5	1.5	1.9	1.8	1.8	1.4
<i>September quarter 1996</i>	1.5	1.6	1.6	1.8	1.7	1.8	1.4
TAKINGS FROM ACCOMMODATION (\$'000)							
<i>September quarter 1995</i>	1,626	1,338	2,964	11,026	4,475	15,501	777
<i>1996—</i>							
July	515	440	955	3,276	1,395	4,671	221
August	471	403	874	3,055	1,437	4,491	209
September	550	481	1,031	3,453	1,747	5,200	314
<i>September quarter 1996</i>	1,536	1,324	2,860	9,784	4,578	14,362	745

(a) Coverage breaks in series occurred as from September quarter 1996. See page 2, "Changes in this issue". (b) The East Coast Tourist Area comprises Glamorgan/Spring Bay (M) and Break O' Day (M).

TABLE 8 — HOTELS, MOTELS AND GUEST HOUSES WITH FACILITIES: STATISTICAL DIVISIONS

Statistical Divisions and selected Statistical Local Areas	Establish- ments	Guest rooms	Bed spaces	Employ- ment (persons)	Room nights occupied				Room occupancy rates (per cent)			
					July	Aug.	Sept.	Sept. qtr	July	Aug.	Sept.	Sept. qtr
Clarence (C)	6	64	177	101	548	632	742	1,922	27.6	31.9	38.6	32.6
Glenorchy (C)	7	204	513	96	1,965	1,926	2,292	6,183	31.1	30.5	37.5	32.9
Hobart (C)												
Inner	6	431	1,051	200	5,023	5,965	7,019	18,007	37.6	44.6	54.3	45.4
Remainder	29	1,158	3,347	1,343	18,214	17,902	20,093	56,209	50.7	49.9	57.8	52.8
Total	35	1,589	4,398	1,543	23,237	23,867	27,112	74,216	47.2	48.5	56.9	50.8
Balance	6	77	221	53	399	464	572	1,435	16.7	19.4	24.8	20.3
<i>Greater Hobart (SD)</i>	<i>54</i>	<i>1,934</i>	<i>5,309</i>	<i>1,793</i>	<i>26,149</i>	<i>26,889</i>	<i>30,718</i>	<i>83,756</i>	<i>43.6</i>	<i>44.8</i>	<i>52.9</i>	<i>47.1</i>
Glamorgan/Spring Bay (M)	10	334	1,212	187	2,429	2,332	3,231	7,992	23.5	22.5	32.2	26.0
Tasman (M)	6	136	405	77	1,418	832	1,129	3,379	33.6	19.7	27.7	27.0
Balance	8	143	332	55	543	547	726	1,816	12.2	12.3	16.9	13.8
<i>Southern (SD)</i>	<i>24</i>	<i>613</i>	<i>1,949</i>	<i>319</i>	<i>4,390</i>	<i>3,711</i>	<i>5,086</i>	<i>13,187</i>	<i>23.1</i>	<i>19.5</i>	<i>27.7</i>	<i>23.4</i>
Break O'Day (M)	6	178	458	87	953	927	1,197	3,077	17.3	16.8	22.4	18.8
Launceston (C)												
Inner	10	474	1,349	344	7,838	7,988	7,981	23,807	53.3	54.4	56.1	54.6
Parts B & C	24	622	2,034	297	7,376	7,617	8,518	23,511	38.3	39.5	45.6	41.1
Total	34	1,096	3,383	641	15,214	15,605	16,499	47,318	44.8	45.9	50.2	46.9
Northern Midlands (M) — Pts A & B	3	25	67	20	124	332	315	771	16.0	42.8	42.0	33.5
West Tamar (M) — Pts A & B	7	124	390	115	791	962	1,144	2,897	20.6	25.0	30.8	25.4
Balance	10	233	675	495	3,046	2,570	3,308	8,924	42.2	35.6	47.3	41.6
<i>Northern (SD)</i>	<i>60</i>	<i>1,656</i>	<i>4,973</i>	<i>1,358</i>	<i>20,128</i>	<i>20,396</i>	<i>22,463</i>	<i>62,987</i>	<i>39.2</i>	<i>39.7</i>	<i>45.2</i>	<i>41.3</i>
Burnie (C) — Pts A & B	8	237	577	128	2,592	2,830	2,917	8,339	35.3	38.5	41.0	38.2
Central Coast (M) — Pts A & B	5	115	291	77	955	961	1,006	2,922	26.8	27.0	29.2	27.6
Circular Head (M)	3	94	236	82	901	776	1,080	2,757	30.9	26.6	38.3	31.9
Devonport (C)	9	242	705	131	2,326	2,274	2,656	7,256	31.0	30.3	36.6	32.6
Waratah/Wynyard (M) — Pts A & B	7	121	314	57	711	625	745	2,081	19.0	16.7	20.5	18.7
West Coast (M)	11	424	1,212	186	3,060	2,793	3,553	9,406	23.3	21.2	27.9	24.1
Balance	7	168	635	131	2,343	1,983	2,345	6,671	45.0	38.1	46.5	43.2
<i>Mersey-Lyell (SD)</i>	<i>50</i>	<i>1,401</i>	<i>3,970</i>	<i>792</i>	<i>12,888</i>	<i>12,242</i>	<i>14,302</i>	<i>39,432</i>	<i>29.7</i>	<i>28.2</i>	<i>34.0</i>	<i>30.6</i>
<i>Total Tasmania</i>	<i>188</i>	<i>5,604</i>	<i>16,201</i>	<i>4,262</i>	<i>63,555</i>	<i>63,238</i>	<i>72,569</i>	<i>199,362</i>	<i>36.6</i>	<i>36.4</i>	<i>43.2</i>	<i>38.7</i>

AND SELECTED STATISTICAL LOCAL AREAS, TASMANIA, SEPTEMBER QUARTER 1996

<i>Guest nights</i>				<i>Guest arrivals</i>				<i>Takings from accommodation (\$'000)</i>			
<i>July</i>	<i>Aug.</i>	<i>Sept.</i>	<i>Sept. qtr</i>	<i>July</i>	<i>Aug.</i>	<i>Sept.</i>	<i>Sept. qtr</i>	<i>July</i>	<i>Aug.</i>	<i>Sept.</i>	<i>Sept. qtr</i>
884	1,043	1,416	3,343	663	762	980	2,405	41	41	56	138
3,107	3,070	4,128	10,305	1,873	1,889	2,279	6,041	88	85	114	286
7,518	8,995	11,404	27,917	3,830	4,432	6,189	14,451	354	429	503	1,285
28,630	28,544	32,856	90,030	13,024	13,847	14,989	41,860	1,511	1,394	1,562	4,466
36,148	37,539	44,260	117,947	16,854	18,279	21,178	56,311	1,864	1,822	2,065	5,752
653	792	984	2,429	451	513	619	1,583	23	25	30	78
40,792	42,444	50,788	134,024	19,841	21,443	25,056	66,340	2,016	1,973	2,265	6,253
4,786	4,423	7,357	16,566	3,432	3,257	5,243	11,932	182	173	259	613
2,874	1,675	2,465	7,014	2,107	1,369	2,081	5,557	106	60	85	251
925	941	1,373	3,239	600	592	840	2,032	25	31	36	92
8,585	7,039	11,195	26,819	6,139	5,218	8,164	19,521	313	263	380	956
1,766	1,619	2,136	5,521	1,188	1,151	1,542	3,881	40	37	55	131
10,138	10,699	11,662	32,499	5,244	5,435	6,750	17,429	587	560	555	1,702
12,037	13,371	15,894	41,302	7,441	8,114	9,613	25,168	455	500	552	1,507
22,175	24,070	27,556	73,801	12,685	13,549	16,363	42,597	1,041	1,060	1,108	3,209
208	509	493	1,210	123	174	204	501	6	10	10	26
1,353	1,667	2,019	5,039	827	1,056	1,262	3,145	44	53	67	164
4,694	4,112	5,390	14,196	2,041	1,886	2,488	6,415	256	221	284	761
30,196	31,977	37,594	99,767	16,864	17,816	21,859	56,539	1,387	1,381	1,524	4,292
3,301	3,550	3,865	10,716	2,034	2,236	2,323	6,593	181	198	199	578
1,384	1,438	1,611	4,433	923	953	1,047	2,923	47	48	51	146
1,318	1,324	1,759	4,401	1,014	950	1,395	3,359	50	47	69	166
3,216	3,081	3,945	10,242	2,221	2,155	2,840	7,216	161	160	180	501
1,364	1,150	1,460	3,974	754	628	841	2,223	45	37	41	124
5,170	4,375	6,383	15,928	2,977	2,510	4,374	9,861	195	160	219	574
4,931	4,015	5,057	14,003	2,600	2,340	3,063	8,003	276	223	272	771
20,684	18,933	24,080	63,697	12,523	11,772	15,883	40,178	955	874	1,031	2,860
100,257	100,393	123,657	324,307	55,367	56,249	70,962	182,578	4,671	4,491	5,200	14,362

TABLE 9 — HOLIDAY FLATS, UNITS AND HOUSES BY STATISTICAL DIVISION AND SELECTED STATISTICAL AREAS, TASMANIA (a)

Particulars	Northern (SD)							East Coast (b)
	Greater Hobart (SD)	Southern (SD)	Greater Launceston and Central North (SSDs)	North Eastern (SSD)	Total	Mersey-Lyell (SD)	Total Tasmania	
LETTING ENTITIES, CAPACITY AND EMPLOYMENT								
September quarter 1995—								
Letting entities	13	9	11	7	18	14	54	11
Flats, units and houses								
Single bedroom	48	21	85	30	115	42	226	41
Multiple bedroom	183	81	139	71	210	121	595	95
Total flats, units and houses	231	102	224	101	325	163	821	136
Bed spaces	1,039	511	908	474	1,382	733	3,665	625
Employment (persons)	73	44	152	28	180	46	343	50
September quarter 1996—								
Letting entities	13	11	11	7	18	15	57	13
Flats, units and houses								
Single bedroom	50	21	89	28	117	52	240	39
Multiple bedroom	183	94	142	73	215	126	618	111
Total flats, units and houses	233	115	231	101	332	178	858	150
Bed spaces	1,041	577	913	474	1,387	795	3,800	704
Employment (persons)	61	47	138	22	160	54	322	48
UNIT NIGHTS OCCUPIED								
September quarter 1995	9,335	3,156	9,063	2,213	11,276	5,011	28,778	3,324
1996—								
July	3,122	1,019	2,392	363	2,755	1,381	8,277	762
August	2,666	896	2,228	357	2,585	1,535	7,682	796
September	4,470	1,511	3,079	701	3,780	2,280	12,041	1,439
September quarter 1996	10,258	3,426	7,699	1,421	9,120	5,196	28,000	2,997
UNIT OCCUPANCY RATES (per cent)								
September quarter 1995	43.9	35.1	44.0	23.8	37.7	33.4	38.3	27.5
1996—								
July	43.2	28.6	33.4	11.6	26.8	25.0	31.1	16.4
August	36.9	25.1	31.1	11.4	25.1	27.8	28.9	17.1
September	63.9	43.8	44.4	23.1	38.0	42.7	46.8	32.0
September quarter 1996	47.9	32.4	36.2	15.3	29.9	31.7	35.5	21.7
UNIT LETTINGS								
September quarter 1995	3,234	1,962	4,723	950	5,673	2,367	13,236	1,774
1996—								
July	997	698	1,309	194	1,503	707	3,905	485
August	988	636	1,296	198	1,494	699	3,817	536
September	1,452	1,116	1,698	357	2,055	1,081	5,704	963
September quarter 1996	3,437	2,450	4,303	749	5,052	2,487	13,426	1,984
AVERAGE LENGTH OF STAY (days)								
September quarter 1995	2.9	1.6	1.9	2.3	2.0	2.1	2.2	1.9
1996—								
July	3.1	1.5	1.8	1.9	1.8	2.0	2.1	1.6
August	2.7	1.4	1.7	1.8	1.7	2.2	2.0	1.5
September	3.1	1.4	1.8	2.0	1.8	2.1	2.1	1.5
September quarter 1996	3.0	1.4	1.8	1.9	1.8	2.1	2.1	1.5
TAKINGS FROM ACCOMMODATION (\$'000)								
September quarter 1995	625	238	716	102	818	253	1,933	212
1996—								
July	209	69	191	21	212	77	567	50
August	175	63	189	19	208	82	528	52
September	280	121	265	43	308	118	827	109
September quarter 1996	663	253	645	83	728	278	1,922	211

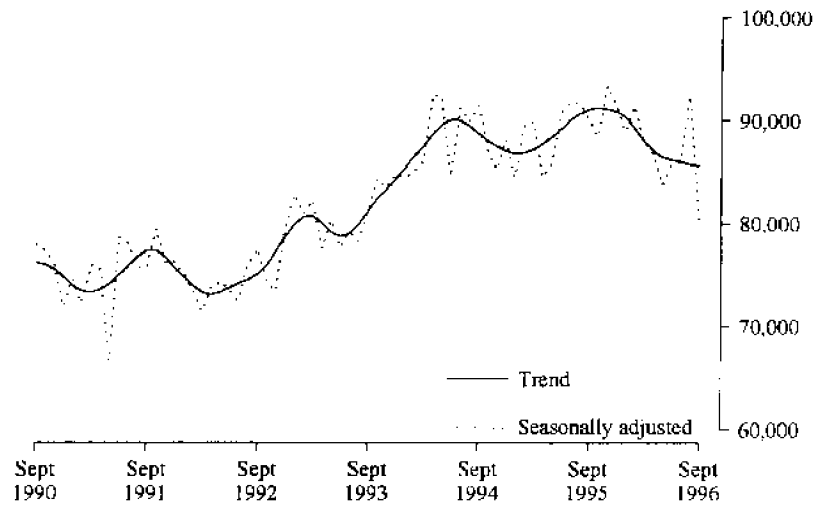
(a) Coverage breaks in series occurred as from September quarter 1996. See page 2, "Changes in this issue". (b) The East Coast Tourist Area comprises Glamorgan/Spring Bay (M) and Break O' Day (M).

TABLE 10 — CARAVAN PARKS BY STATISTICAL DIVISION AND SELECTED STATISTICAL AREAS, TASMANIA

Particulars	Northern (SD)				Total	Mersey-Lyell (SD)	Total Tasmania	East Coast (a)
	Greater Hobart (SD)	Southern (SD)	Greater Launceston and Central North (SSDs)	North Eastern (SSD)				
ESTABLISHMENTS, CAPACITY AND EMPLOYMENT								
<i>September quarter 1995</i>								
Establishments	7	18	12	8	20	27	72	11
Capacity								
On-site vans	78	68	56	25	81	158	385	57
Other powered sites	243	788	484	504	988	1,462	3,481	656
Unpowered sites	252	373	307	554	861	610	2,096	520
Cabins, flats, etc.	66	128	72	20	92	169	455	77
<i>Total capacity</i>	<i>639</i>	<i>1,357</i>	<i>919</i>	<i>1,103</i>	<i>2,022</i>	<i>2,399</i>	<i>6,417</i>	<i>1,310</i>
Sites occupied by long-term guests	74	26	86	9	95	229	424	31
Other sites permanently reserved	7	332	102	288	390	280	1,009	358
Employment (persons)	30	69	35	22	57	82	238	42
<i>September quarter 1996</i>								
Establishments	7	18	12	8	20	28	73	11
Capacity								
On-site vans	74	64	50	23	73	159	370	52
Other powered sites	244	803	483	507	990	1,464	3,501	662
Unpowered sites	258	355	317	554	871	645	2,129	511
Cabins, flats, etc.	65	146	79	20	99	181	491	87
<i>Total capacity</i>	<i>641</i>	<i>1,368</i>	<i>929</i>	<i>1,104</i>	<i>2,033</i>	<i>2,449</i>	<i>6,491</i>	<i>1,312</i>
Sites occupied by long-term guests	67	19	75	14	89	267	442	28
Other sites permanently reserved	7	343	105	312	417	340	1,107	372
Employment (persons)	34	72	42	25	67	91	264	48
SITE NIGHTS OCCUPIED								
<i>September quarter 1995</i>	<i>14,347</i>	<i>38,533</i>	<i>22,151</i>	<i>30,225</i>	<i>52,376</i>	<i>56,826</i>	<i>162,082</i>	<i>41,660</i>
<i>1996—</i>								
July	3,468	11,547	7,281	10,597	17,878	22,023	54,916	13,316
August	3,731	12,247	7,544	10,740	18,284	21,878	56,140	13,361
September	3,921	12,694	8,476	10,864	19,340	22,181	58,136	13,756
<i>September quarter 1996</i>	<i>11,120</i>	<i>36,488</i>	<i>23,301</i>	<i>32,201</i>	<i>55,502</i>	<i>66,082</i>	<i>169,192</i>	<i>40,433</i>
SITE OCCUPANCY RATES (per cent)								
<i>September quarter 1995</i>	<i>24.4</i>	<i>31.4</i>	<i>26.2</i>	<i>30.7</i>	<i>28.6</i>	<i>25.7</i>	<i>27.7</i>	<i>35.1</i>
<i>1996—</i>								
July	17.5	27.2	25.3	31.0	28.4	29.0	27.3	32.7
August	18.8	28.9	26.2	31.4	29.0	28.8	27.9	32.9
September	20.4	30.9	30.4	32.8	31.7	30.2	29.9	34.9
<i>September quarter 1996</i>	<i>18.9</i>	<i>29.0</i>	<i>27.3</i>	<i>31.7</i>	<i>29.7</i>	<i>29.3</i>	<i>28.3</i>	<i>33.5</i>
TAKINGS FROM ACCOMMODATION (\$'000)								
<i>September quarter 1995</i>	<i>213</i>	<i>261</i>	<i>197</i>	<i>56</i>	<i>253</i>	<i>385</i>	<i>1,111</i>	<i>234</i>
<i>1996—</i>								
July	55	66	59	19	78	148	347	52
August	58	56	70	22	92	153	361	48
September	77	137	84	33	116	170	501	121
<i>September quarter 1996</i>	<i>190</i>	<i>261</i>	<i>213</i>	<i>74</i>	<i>286</i>	<i>472</i>	<i>1,209</i>	<i>221</i>

(a) The East Coast Tourist Area comprises Glamorgan/Spring Bay (M) and Break O'Day (M).

HOTEL/MOTEL ROOM NIGHTS



HOLIDAY UNIT NIGHTS

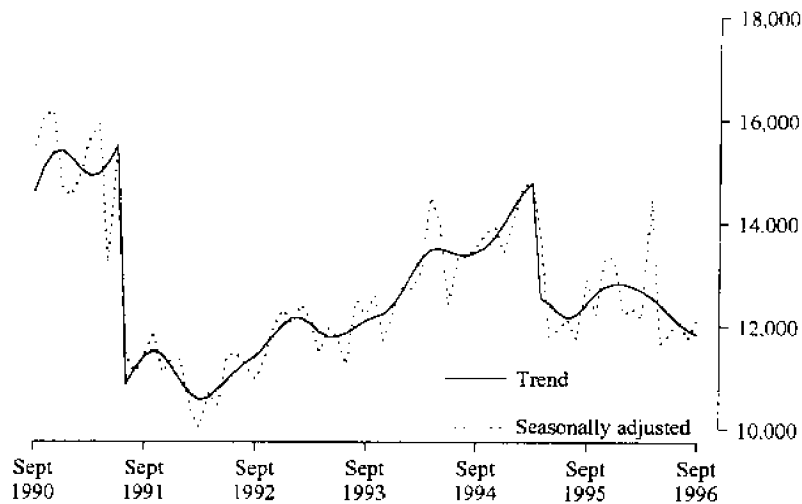


TABLE 11. HOTEL & MOTEL ETC. ROOM NIGHTS, HOLIDAY UNIT NIGHTS AND CARAVAN PARK SITE NIGHTS: SEASONALLY ADJUSTED AND TREND ESTIMATES

		Hotel, motel etc. with facilities, room nights		Holiday unit nights		Caravan park site nights	
		Seasonally adjusted	Trend	Seasonally adjusted	Trend	Seasonally adjusted	Trend
1994	July	91,256	90,054	13,339	13,384	65,090	64,111
	August	89,909	89,551	13,333	13,370	65,978	64,925
	September	91,464	88,751	13,543	13,428	64,782	65,522
	October	87,143	88,037	13,821	13,544	66,032	65,758
	November	85,236	87,545	13,932	13,743	66,767	65,634
	December	88,136	87,108	13,433	14,000	65,194	65,284
1995	January	84,462	86,826	14,001	14,297	63,575	65,044
	February	89,522	86,896	14,704	14,601	65,183	65,070
	March	89,885	87,220	14,828	14,780	64,164	65,209
	April	84,545	87,811	13,749	12,543	67,308	65,390
	May	85,913	88,469	11,809	12,428	65,379	65,540
	June	90,857	89,209	11,956	12,252	65,727	65,523
	July	91,724	90,010	12,144	12,158	65,084	65,398
	August	91,661	90,657	11,760	12,233	64,125	65,309
	September	90,106	91,103	12,918	12,446	66,559	65,272
	October	88,438	91,208	12,224	12,641	64,974	65,396
	November	93,421	91,108	13,331	12,773	65,367	65,686
	December	91,340	90,882	13,329	12,820	66,831	65,882
1996	January	88,997	90,353	12,240	12,818	64,854	65,931
	February	91,402	89,251	12,353	12,771	65,465	65,858
	March	87,965	88,025	12,136	12,681	69,259	65,832
	April	86,789	87,026	14,486	12,560	63,649	65,963
	May	83,759	86,481	11,651	12,412	63,992	66,242
	June	85,705	86,237	11,829	12,248	68,240	66,664
	July	86,142	86,049	12,153	12,074	67,597	67,112
	August	92,416	85,783	11,762	11,936	68,379	67,505
	September	80,295	85,609	12,144	11,833	67,006	67,735

TABLE 12 — VISITOR HOSTELS BY STATISTICAL DIVISION, TASMANIA (a)

Particulars	Greater Hobart (SD)	Southern (SD)	Northern (SD)	Mersey-Lyell (SD)	Total Tasmania
ESTABLISHMENTS, CAPACITY AND EMPLOYMENT					
<i>September quarter 1995</i> —					
Establishments	7	17	9	8	41
Bed spaces	394	542	294	540	1,770
Employment (persons)	30	28	15	22	95
<i>September quarter 1996</i> —					
Establishments	8	17	12	9	46
Bed spaces	472	570	406	648	2,096
Employment (persons)	50	33	24	23	130
GUEST NIGHTS					
<i>September quarter 1995</i>	4,813	2,545	1,465	3,981	12,804
<i>1996</i> —					
July	1,753	1,301	645	1,217	4,916
August	1,662	1,457	608	1,045	4,772
September	2,765	2,134	1,433	1,783	8,115
<i>September quarter 1996</i>	6,180	4,892	2,686	4,045	17,803
BED OCCUPANCY RATES (per cent)					
<i>September quarter 1995</i>	13.3	5.1	5.4	8.7	8.1
<i>1996</i> —					
July	12.0	7.4	5.1	6.1	7.6
August	11.4	8.2	4.8	5.2	7.3
September	19.5	12.5	11.8	9.2	12.9
<i>September quarter 1996</i>	14.2	9.3	7.2	6.8	9.2
GUEST ARRIVALS					
<i>September quarter 1995</i>	2,350	1,814	1,054	2,828	8,046
<i>1996</i> —					
July	953	980	514	873	3,320
August	1,107	993	396	772	3,268
September	1,592	1,474	845	1,244	5,155
<i>September quarter 1996</i>	3,652	3,447	1,755	2,889	11,743
AVERAGE LENGTH OF STAY (days)					
<i>September quarter 1995</i>	2.0	1.4	1.4	1.4	1.6
<i>1996</i> —					
July	1.8	1.3	1.3	1.4	1.5
August	1.5	1.5	1.5	1.4	1.5
September	1.7	1.4	1.7	1.4	1.6
<i>September quarter 1996</i>	1.7	1.4	1.5	1.4	1.5
TAKINGS FROM ACCOMMODATION (\$'000)					
<i>September quarter 1995</i>	59	42	14	42	158
<i>1996</i> —					
July	23	16	8	12	60
August	20	19	7	12	57
September	32	25	14	19	90
<i>September quarter 1996</i>	75	60	29	43	207

(a) Coverage breaks in series occurred as from September quarter 1996. See page 2. "Changes in this issue".

**TABLE 13. PASSENGER ARRIVALS AND DEPARTURES, TASMANIA,
INTERSTATE AND INTERNATIONAL (a)(d)**
(Source: Tourism, Sport & Recreation)

Period	Arrivals			Total	Total Departures (b)	Cruise Ships (c)	
	By air		By sea			Arrivals	Departures
	Interstate	International					
1988	571,344	8,625	101,572	681,541	683,635	5,497	6,161
1989	449,481	8,489	118,646	576,616	591,152	4,149	4,149
1990	555,631	8,629	120,004	684,264	679,833	3,255	3,255
1991	625,366	5,897	131,375	762,638	764,731	6,720	6,663
1992	652,092	4,428	114,969	771,489	761,109	4,608	4,608
1993	694,244	5,144	115,381	814,769	814,835	2,033	2,033
1994	745,508	4,166	128,644	878,318	880,936	6,592	6,592
1995	811,784	3,982	116,869	932,635	931,278	6,199	6,199
1994-							
January	73,470	473	12,536	86,479	103,610	1,596	1,596
February	63,506	413	12,324	76,243	69,690	2,470	2,470
March	66,848	414	13,054	80,316	85,030	1,064	1,064
April	62,519	502	11,732	74,753	78,095	-	-
May	50,076	242	8,151	58,469	70,924	-	-
June	52,737	167	7,629	60,533	56,244	-	-
July	52,995	186	6,983	60,164	63,737	-	-
August	50,447	250	7,199	57,896	61,996	-	-
September	69,099	340	13,430	82,869	66,659	-	-
October	61,361	422	11,466	73,249	71,846	980	980
November	63,701	338	10,707	74,746	73,918	482	482
December	78,749	419	13,433	92,601	79,187	-	-
1995-							
January	80,818	318	12,430	93,566	115,126	1,368	1,368
February	78,700	269	11,704	90,673	81,727	1,772	1,772
March	68,790	351	13,087	82,228	86,348	659	659
April	66,840	423	9,584	76,847	83,918	-	-
May	53,364	277	8,368	62,009	70,563	-	-
June	57,146	211	7,678	65,035	62,555	-	-
July	56,761	294	5,793	62,848	59,312	-	-
August	58,124	240	4,027	62,391	65,381	-	-
September	73,105	407	11,150	84,662	72,559	-	-
October	65,079	346	10,889	76,314	75,628	-	-
November	68,990	394	10,187	79,571	77,855	810	810
December	84,067	452	11,972	96,491	80,306	1,590	1,590
1996-							
January	83,246	384	12,756	96,386	114,160	2,806	2,806
February	74,239	377	10,926	85,542	79,106	1,630	1,630
March	71,858	503	10,998	83,359	89,056	-	-
April	72,146	355	9,652	82,153	84,390	-	-
May	60,990	182	4,861	66,033	78,425	-	-
June	63,351	120	5,417	68,888	66,010	-	-

(a) The following persons are not included in these statistics : passengers under three years of age accompanied by an adult ; passengers travelling on chartered flights with minor carriers ; passengers travelling on private or VIP flights.

(b) The approximate proportion of departing passengers who were visitors was shown to be 58 per cent in the 1981 Tasmanian Visitor Survey, 55 per cent in the 1984 TVS, 53 per cent in the 1986 TVS, 60 per cent in the 1988 TVS, 65 per cent in the 1990 TVS, 58 per cent in the 1991 TVS, 55 per cent in the 1992 TVS, 58 per cent in the 1993 TVS, 60 per cent in the 1994 TVS and 58 per cent in the 1995 TVS.

(c) Cruise ship statistics were not collected before November 1986 and are not included in Total Arrivals and Total Departures.

(d) The domestic airline pilots dispute commenced on 18 August 1989 with the pilots working restricted hours (9 a.m to 5 p.m). The pilots were suspended on 23 August 1989.

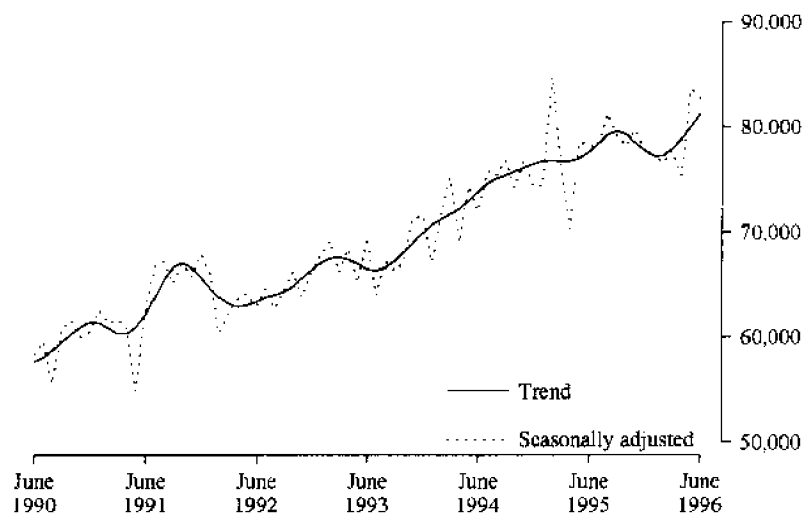
TABLE 14. TOTAL PASSENGER ARRIVALS BY AIR AND SEA INTO TASMANIA :
SEASONALLY ADJUSTED AND TREND SERIES (a)(b)

<i>Period</i>	<i>Original</i>	<i>Seasonally adjusted (a)</i>	<i>Trend</i>
<i>June</i>			
1990	48,623	58,316	57,648
1991	52,243	62,314	62,119
1992	52,354	62,890	63,368
1993	57,479	69,495	66,469
1994	60,533	71,998	73,848
1995	65,035	78,183	77,636
1996	68,888	82,722	81,326
1994-			
January	86,479	67,166	70,676
February	76,243	71,406	71,184
March	80,316	75,178	71,659
April	74,753	69,037	72,246
May	58,469	74,329	72,996
June	60,533	71,998	73,848
July	60,164	75,721	74,623
August	57,896	75,372	75,047
September	82,869	76,858	75,355
October	73,249	74,218	75,752
November	74,746	76,760	76,129
December	92,601	74,350	76,496
1995-			
January	93,566	74,470	76,709
February	90,673	84,724	76,756
March	82,228	76,099	76,695
April	76,847	70,362	76,747
May	62,009	78,554	77,022
June	65,035	78,183	77,636
July	62,848	78,173	78,455
August	62,391	81,276	79,256
September	84,662	79,187	79,598
October	76,314	78,183	79,265
November	79,571	79,734	78,526
December	96,491	77,749	77,754
1996-			
January	96,386	77,172	77,233
February	85,542	76,566	77,292
March	83,359	77,720	77,895
April	82,153	75,312	78,876
May	66,033	83,587	80,039
June	68,888	82,722	81,326

(a) There is an annual recalculation of seasonal adjustment factors to include the most recent year's arrivals. This occurs at the end of each financial year and may cause revisions to previously-published seasonally-adjusted and trend figures, as can be seen in Table 14. A full printout of seasonally-adjusted and trend series figures dating back to 1971 can be obtained through the publication officer for this publication (Eddie Oakford).

(b) The domestic airline dispute commenced on 18 August 1989 with the pilots working restricted hours (9 a.m. to 5 p.m.). The pilots were suspended on 23 August 1989.

TOTAL ARRIVALS IN TASMANIA



EXPLANATORY NOTES

INTRODUCTION

1 This publication contains data for Tasmania from a quarterly survey of tourist accommodation establishments.

SCOPE

2 Tourist accommodation establishments currently included in the survey comprise two groups:

- Establishments which provide predominantly short-term accommodation (i.e. for periods of less than 2 months) to the general public. These include:
 - *Hotels, motels and guest houses, with facilities* being hotels licensed to operate a public bar and motels, private hotels and guest houses all of which provide a bath (or shower) and toilet in most guest rooms and have breakfast available for guests. NOTE: From December quarter 1993, hotel, motel and guest house establishments with fewer than five rooms have been formally excluded from the scope of this statistical collection.
 - *Holiday flats, units and houses* (excluding establishments predominantly operated on a time share basis) which are operated by owners, managers or real estate agents who have sole letting rights to at least five flats, units or houses for short-term letting. They are mainly self-contained in terms of cooking, bath (or shower) and toilet facilities and do not have breakfast available for guests. Data for holiday flats, units and houses include short-term owner occupation as well as paying guest occupation.
 - *Visitor hostels* which provide accommodation to visitors on a bed basis (rather than by the room). This category does not include establishments providing charity type accommodation (e.g. Salvation Army hostels) nor hotels, motels and guest houses without in-room facilities which provide accommodation on a per room basis.
 - *Caravan parks* which provide either predominantly short-term (i.e. for periods of less than 2 months) or predominantly long-term (i.e. for periods of 2 months or more) accommodation to the general public and which provide powered sites for caravans and toilet, shower and laundry facilities for guests.

3 Data collected and published for each type of establishment (other than holiday flats, units and houses) include both long-term and short-term guests at these establishments.

4 Establishments which provide more than one type of accommodation (e.g. a motel with attached caravan park) are treated as two or more separate establishments. However, self-contained units, flats, cabins, etc. attached to hotels, motels or to caravan parks are included in the capacity for those establishments and not treated as separate holiday flat, unit or house establishments.

AUSTRALIAN STANDARD GEOGRAPHICAL CLASSIFICATION

5 Statistics presented in this publication have been classified according to the Australian Standard Geographical Classification (ASGC), Edition 1996. This classification incorporates a number of hierarchic structures of geographic areas. The appropriate spatial units of the main structure of the ASGC used in this publication are defined as follows.

EXPLANATORY NOTES

AUSTRALIAN STANDARD GEOGRAPHICAL CLASSIFICATION continued

STATISTICAL LOCAL AREAS (SLAs) are legal Local Government Areas or parts thereof, which serve as the smallest type of spatial unit considered appropriate for the presentation of statistics and which add, without gaps or overlaps, to;

STATISTICAL SUBDIVISIONS (SSDs) which in turn represent another, higher hierarchic level and add, without gaps or overlaps, to;

STATISTICAL DIVISIONS (SDs) which in turn add, without gaps or overlaps, to;

Total Tasmania.

For more detailed information, refer to the ASGC (1216.0).

UNPUBLISHED STATISTICS

6 The ABS may make available on request certain unpublished tourist accommodation statistics. A charge may be made for this information.

RELATED PUBLICATIONS

7 Publications for Australia, and each State and Territory, are released by the respective offices of the ABS. Tourist accommodation statistics for past quarters are available on request. Other ABS publications which may be of interest include:

- *Directory of Tourism Statistics* (1130.0) (irregular: first and latest issue, 1991)
- *Overseas Arrivals and Departures, Australia* (3401.0) (monthly)
- *Tourism Indicators, Australia* (8634.0) (quarterly)
- *Tourism Accommodation, Australia* (8635.0) (quarterly)

8 Current publications produced by the ABS are listed in the *Catalogue of Publications and Products* (1101.0). The ABS also issues the *Release Advice* (1105.0) on Tuesdays and Fridays which lists publications to be released in the next few days. Both the *Catalogue* and *Release Advice* are available from any ABS office.

SYMBOLS AND OTHER USAGES

n.a. not available

n.p. not available for publication but included in totals where applicable

r revised

.. not applicable

— nil or rounded to zero

— break in continuity of the series (where drawn across a column between two consecutive figures)

9 Where figures have been rounded, discrepancies may occur between totals and the sums of the component items.

GLOSSARY

.....

Average length of stay	<p>Average length of stay is expressed in numbers of days and calculated:</p> <ul style="list-style-type: none"> ▪ for hotels, motels and guest houses, by dividing <i>Guest nights</i> by <i>Guest arrivals</i> and ▪ for holiday flats, units and houses, by dividing <i>Unit nights occupied</i> by <i>Unit lettings</i>.
Bed spaces	Three-quarter beds are counted as one bed space; double beds as two bed spaces. Cots are excluded.
Capacity	Capacity in terms of <i>Guest rooms</i> , <i>Bed spaces</i> , <i>Holiday units</i> or <i>Caravan park sites</i> , etc. is the maximum number available to accommodate paying guests during the survey period. Capacity closed temporarily for seasonal reasons is included.
Caravan park capacity	The total number of <i>On-site vans</i> , <i>Other powered sites</i> , <i>Unpowered sites</i> and <i>Cabins</i> , etc.
Employment	The number of persons working at accommodation establishments at the end of the survey period (including working proprietors and those working on other than accommodation activities).
Establishments	For hotels, motels and guest houses, caravan parks and visitor hostels, the number of establishments within the scope of the survey which operated for any part of the survey period, or which closed temporarily for the quarter for seasonal reasons.
Guest arrivals	The total number of paying guests counted only on the first night they stayed at the accommodation establishment.
Letting entities	For holiday flats, units and houses, the number of owners, managers or real estate agents within the scope of the survey who operated for any part of the survey period.
Occupancy	<p>Occupancy in terms of <i>Room nights</i>, <i>Unit nights</i> or <i>Site nights occupied</i> refers to the total number of nights each guest room, holiday unit or caravan park site, etc. was occupied during the survey period. NOTE: From September quarter 1992, caravan park sites, etc. permanently reserved for 2 months or more at the end of the survey period but only casually occupied by their tenants have been recorded continuously as <i>Site nights occupied</i> irrespective of whether the tenants of individual sites were in residence on any particular night.</p> <p>Occupancy in terms of <i>Guest nights</i> refers to the total number of nights each paying guest stayed during the survey period.</p>
Occupancy rates	<p><i>Occupancy rates</i> represent occupancy expressed as a percentage of total capacity available during the survey period, e.g.</p> $\text{Room occupancy rate (\%)} \text{ for the period} = \frac{\text{Room nights occupied}}{(\text{Guest rooms}) \times (\text{No. of days in the period})} \times 100$ <p>providing that, for establishments closing (other than for seasonal reasons) or opening during the survey period, the denominator of the above expression includes only operating periods.</p>

GLOSSARY

.....

- Other sites permanently reserved** The total number of powered and unpowered sites, on-site vans and cabins, etc. continuously let for 2 months or more by the end of the survey period to tenants who occupy the sites only on a casual or sporadic basis. Separate data for this item are available only from September quarter 1992.
- Room nights available** The number of guest rooms available multiplied by the number of days for which they were available during the survey period. For establishments closing (other than for seasonal reasons) or opening during the survey period, operating periods only are included.
- Sites occupied by long-term guests** The total number of sites, etc. occupied at the end of the survey period by guests who have stayed continuously for 2 months or more.
- Star grading** The grading of hotels and motels with facilities based on the classification system used by members of the Australian Automobile Association (AAA). The gradings are allocated according to a points system based on the amenities and facilities available to guests. Details of the grading scheme are contained in the RACV-RAASA members' publication *Accommodation Australia*, or the individual tour guides produced by members of the AAA. For the purpose of classifying establishments to a star grading in this publication, 'half' star gradings are ignored (e.g. a two and a half star grading has been shown as two star).
- Takings from accommodation** Revenue received from the provision of accommodation. Takings from meals are excluded. Takings from accommodation for each month generally represent the takings received during that month. Where payments are received in advance of, or after, the provision of accommodation to guests, the monthly figure for takings from accommodation may not necessarily bear a direct relationship to the number of guests accommodated during the month. Rental and storage fees paid to caravan parks for the keeping of private vans in parks are included in the takings of the month they are received.
- Unit lettings** The total number of times a holiday flat, unit or house was occupied by a new tenant, counted only on the first night it was occupied by the new tenant.

Statistical Divisions and Statistical Subdivisions, Tasmania, 1996





QR code linking to the document



FOR MORE INFORMATION

The ABS publishes a wide range of information on Australia's economic and social conditions. A catalogue of publications and products is available from any of our offices (see below).

INFORMATION CONSULTANCY SERVICES

Information tailored to special needs of clients can be obtained from the Information Consultancy Service available at ABS Offices (see below).

ABS PRODUCTS

A large number of ABS products is available from the ABS Bookshops (see below). The ABS also provides a subscription service – you can telephone the ABS Subscription Service Australia wide toll free on 1800 0206 08.

ELECTRONIC SERVICES

A large range of data is available via on-line services, diskette, magnetic tape, tape cartridge and CD ROM. For more details about our electronic data services, contact any ABS office (see below) or email us at:

X.400 (C:Australia,PUB:Telememo,O:ABS,FN:STAT,SN:INFO)
Internet Stat.info@abs.telememo.au
Keylink STAT.INFO/ABS

You can visit us on the Internet at: <http://www.abs.gov.au>

GENERAL SALES AND INQUIRIES

■ Sydney 02 9268 4611 ■ Adelaide 08 8237 7100
■ Melbourne 03 9615 7755 ■ Hobart 002 20 5800
■ Brisbane 07 3222 6351 ■ Darwin 08 8943 2111
■ Perth 09 360 5140 ■ Canberra 06 252 6627

■ Information Services, ABS
PO Box 10, Belconnen ACT 2616



2863560009962

ISSN 0312-6900

RRP \$14.50

© Commonwealth of Australia 1996

Produced by the Australian Government Publishing Service